

WHAT OUR CUSTOMERS SAY

*"Not only are your products reliable, so is your customer service. I cannot speak highly enough of Triangle."
- J.C., Saint-Laurent, Canada*



www.TriangleOshkosh.com
sales@TriangleOshkosh.com

ABOUT TRIANGLE MANUFACTURING

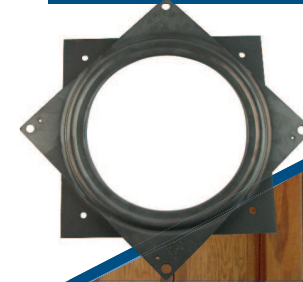


Triangle Manufacturing, located in Oshkosh, WI continues to be a worldwide leader in bearing design and innovation. For nearly 90 years the company has used creative engineering, technical know-how and advanced automation to continue to be the foremost supplier and manufacturer of lazy susan bearings, along with motor mounts, pillow block bearings and fully customizable metal fabrication.

150 Libbey Ave.
Oshkosh, WI 54901
P (920) 235-3710
F (920) 235-4523



Cabinetry Products



LAZY SUSANS

- Corrosion-resistant galvanized steel and electroplate zinc coatings
- Sizes from 3 inches to 12 inches
- Deeper race groove, allowing for smoother movement
- Quarter-inch balls
- Can be greased to dampen noise



COATING OPTIONS

- Clear coat finish, black chromate finish, yellow chromate/zinc finish

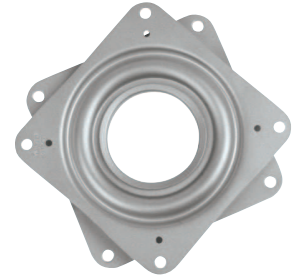
DETENTS

- Customizable rotational positions
- Great for retail or display applications



TUTORIALS

- Confused about how to assemble a Triangle lazy susan bearing? Check out our website for helpful tutorials and how-to videos.
- Still need more help? Call us, or post a question to our Twitter or Facebook for a quick response.



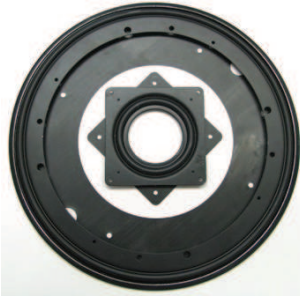
STANDARD SIZES

- 3", 4", 6" square
- 9", 12" round



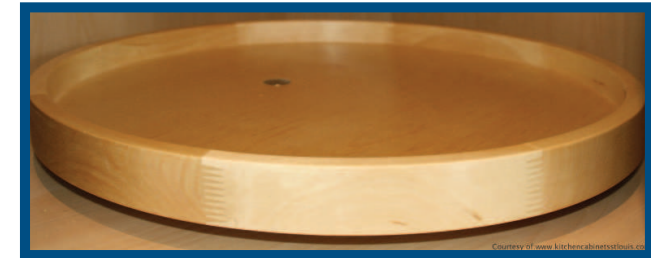
CUSTOMIZATION OPTIONS

- Coating options
- Custom detent placement
- Mounting and trimming holes
- Painting option



SPEED NUTS

- Available for 6", 9" and 12"
- Speed nuts slip over holes in the bearing to provide a #10-24 thread size for screws
- Speed nuts are installed by the customer
- Used for easier installation



APPLICATIONS

- Corner cabinets
- TV or computer turntables
- Advertising displays
- Retail product stands and displays
- Woodworking
- Table-top servers
- And more...



www.TriangleOshkosh.com

